



LEE WILKINSON

POWERED BY
exp UK

49 Stockley Close, Haverhill

Offers Over £450,000

5 2 2

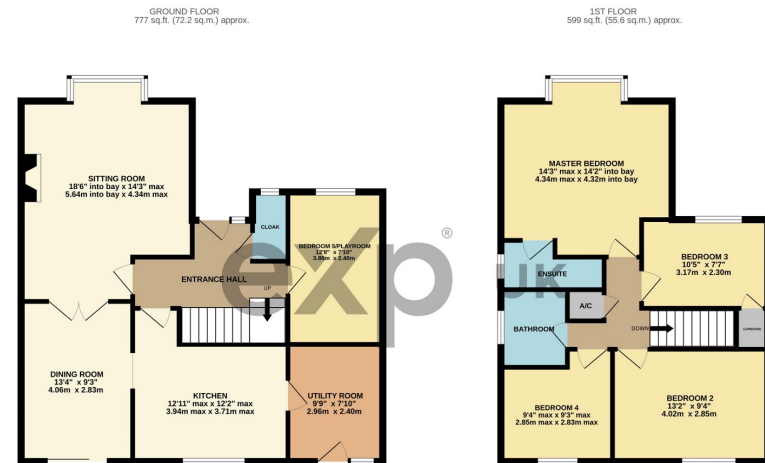
- Five Bedroom detached house
- Detached double garage
- End of quiet cul-de-sac
- Private rear garden
- En-Suite to master
- Close to local amenities
- Plenty of off road parking
- Recently refitted kitchen/utility
- Good schools close by
- Property Ref LW0712



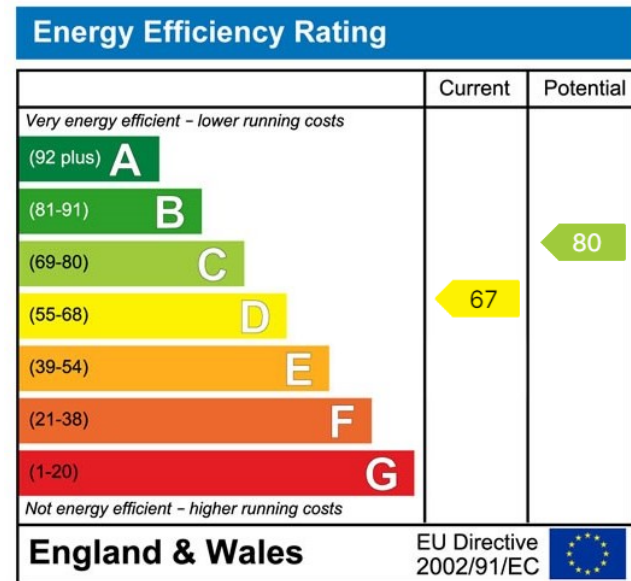
Lee Wilkinson Estate Agents are pleased to offer for sale, a well presented, and recently improved, detached property, set on the edge of the town, at the end of a quiet cul-de-sac. Haverhill offers a good range of retail and leisure facilities including cinema, leisure centre, and golf course. Road links to Cambridge, Bury St Edmunds, Sudbury and Saffron Walden are all close by. The property has been improved by the current owners, with new kitchen, utility and floorcoverings as well as the refitting of both bathroom suites, to now offer comfortable family accommodation, in move in condition. Outside of this home, the front garden is mainly utilised for off road parking, and also benefits from a detached double garage. The rear garden offers a good degree of privacy, with the lawn having been recently replaced, this area is now a lovely space.

Property Ref; LW0712





TOTAL FLOOR AREA: 1376 sq.ft. (127.8 sq.m.) approx.
 Whilst every attempt has been made to ensure the accuracy of the floorplan contained here, measurements of doors, windows, rooms and any other items are approximate and no responsibility is taken for any error, omission or misstatement. This plan is for illustrative purposes only and should be used as such by any prospective purchaser. The services, systems and appliances shown here are not to be relied on and no guarantee is given as to their operability or efficiency can be given.
 Made with Metropac ©2024



LEE WILKINSON

POWERED BY
exp UK